

# Woodland

## Middle School



Orientation Handbook  
*2008-2009*

## **Williamson County Schools**

### **The Mission**

“To cultivate the ability, intellect, and character of each student”

### **The Vision**

In the Williamson County schools you will experience an engaging and academically enriching environment designed to support the collaborative efforts of teachers, students, staff, and community.

### **The Goal**

All students will show at least one year’s academic growth each year.

### **Beliefs**

1. All students can learn more than they are currently learning.
2. Education is the cornerstone of democracy and civility.
3. Respect for ourselves and others will be demonstrated in our interactions.
4. Public education should strive to achieve a balance between academic, vocational, and extra-curricular activities.
5. It is important for all constituencies to work together to attain the strongest educational system possible.
6. Our educational system should be a learning community. All personnel engage in continuous growth opportunities.
7. All forms of data are important in the determination of the present and future plans for public education.
8. Public education is a responsibility shared by schools, families, and members of the community.
  - a. Students will volunteer their attention and commitment when they are supplied with an engaging curriculum. They are the primary customers of our schools.
  - b. Teachers are leaders of students and designers of engaging, high-quality work.
  - c. Principals are “leaders of leaders” who ensure that teachers have the ability, flexibility, resources, and support required to design engaging work for each student.
  - d. District office and other support personnel serve to sustain the work of principals and teachers.
  - e. The superintendent ensures that the entire community is aware of the changing needs of the educational system and of the kinds of support required for the district to pursue its mission.
  - f. The school board supports the efforts of the district as a whole, to accomplish the district mission.
  - g. Members of the community, including families, benefit from the positive results of public education and will offer support in all possible ways.

*Woodland Middle School*  
*1500 Volunteer Parkway*  
*BRENTWOOD, TN 37027*  
*(615) 472-4930 phone*  
*(615) 472-4941 fax*

**WEB SITE:** [www.wcs.edu/wms](http://www.wcs.edu/wms)

Priscilla Fizer  
Principal

Marty Haselden  
Assistant Principal

Bill Toungette  
Assistant Principal

**Our Philosophy**

Woodland Middle School incorporates a rich array of academic and enrichment programs and provides all students with a strong foundation essential to good citizenship and a lifetime of learning.

**We believe...**

A safe environment contributes to a supportive learning experience where all students can reach their full potential.

Technology continues to be an integral part of our relevant and challenging curriculum.

A positive school climate creates a sense of belonging for our diverse population.

All students are unique and deserve authentic and developmentally appropriate activities that enhance learning at all levels.

As Woodland Middle School stakeholders – faculty, staff, parents, and the community share the responsibility for Woodland’s mission.

Table of Contents	
School Staff	2
School Map	3
School History	4
Grading Scale	4
School Schedule	5
Curriculum Overview	6
WMS Services	7
Library Information	8
Athletics	9
Best Practices For Success	10
Activities/Clubs	11
Student Support Services	12
Looking Ahead	13
Math Sequence	14
Science Sequence	15
Four Year Plan Worksheet	16

**Administration**

Priscilla Fizer – Principal  
Bill Toungette – Assistant Principal  
Marty Haselden – Assistant Principal

**Counseling Services**

Kimberly Ezell–8<sup>th</sup> grade, 6<sup>th</sup> Shawnee  
Michele Fuller –7<sup>th</sup> grade, 6<sup>th</sup> Cherokee

**Sixth Grade**

Mary Elizabeth Blakeney – Language Arts  
Len Brosky – Language Arts  
Doug Campbell – Math  
Carol Doidge –Social Studies  
Margaret Hall – Math  
Jason Jordan – Reading  
Mary Jo Pantall-Social Studies  
Deborah Shrum-Science  
Jenni Wingard – Science

**Seventh & Eighth Grade Teachers**

Paula Burnette – Language Arts  
Kathy Butler – Reading  
Sykes Cargile – Physical Science, Science  
Linda Conrad – Math, Algebra I, Geometry  
Cherie Creamer – Social Studies  
Melanie Dukes –Language Arts  
Debra Bade – Math, Algebra I  
Kate Hauck – Math, Algebra I  
Margaret Hill - Math  
Jason Marlin–Social Studies  
Mary Jo Michels – Reading  
Mike Morelli– American History  
Jenny Petrone – English  
Angie Prosis – Language Arts  
Larry Reasonover- Science, Physical Science  
Nelson Turner- Science  
Jennifer Varden- Science

**Enrichment**

Sue Matusik – Spanish  
Mike Linn – Athletic Director, PE  
TBA– PE  
Mike Morrow – Computer  
Jim Jenkins – Drama  
Jay McCulley – Band  
Margie Wineman-Chaney – Music  
Joe Christy – Art

**Special Services Teachers**

Tana McPhee – ESL  
Cindy Fane – Gifted  
Laura Zmuda– Psychologist  
Diane Butler – Speech consultant  
Joyce Hollins – STARS  
Lindsey Anderson – Library Media Specialist  
Terry Weingartner – Nurse

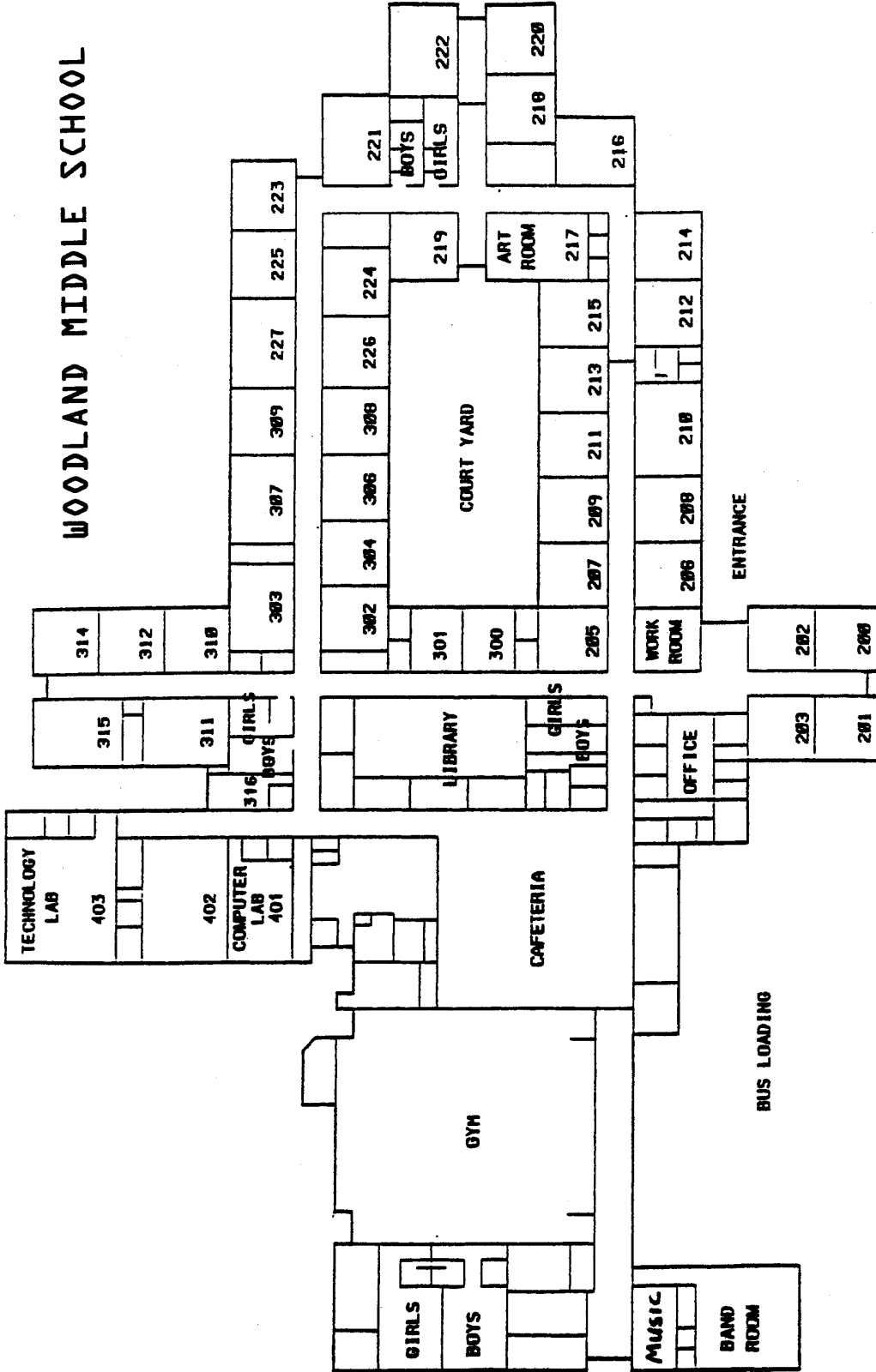
**Special Education**

Katie Stanley – 6<sup>th</sup> grade Resource  
Rhonda Lawrence– 7<sup>th</sup> grade Resource  
TBA – 8<sup>th</sup> Grade Resource  
Sue Maher– Special Services  
Dawn Burke – Assistant  
Joyce Britton – Assistant  
Katie Manley – Assistant  
Katherine Nichols – Assistant

**Support Staff**

Kathy Carver – Secretary  
Joan Harrah – Guidance Secretary  
Jill McAteer – Office Secretary  
Peggy Rein- Library Assistant  
Mandie Bynum– Bookkeeper  
Barbara Stanley – Cafeteria Manager

# WOODLAND MIDDLE SCHOOL



TEACHER PARKING

### **School History**

Woodland Middle School is located in historic Brentwood. WMS opened in August of 1994 with 450 students and 29 faculty members. The projected enrollment for 2008-2009 is approximately 700 students and 60 faculty and staff members. The school stands on land said to have been inhabited by Woodland Indians and thus the name Woodland Middle School.

### **Our Philosophy**

Woodland Middle School incorporates a rich array of academic and enrichment programs and provides all students with a strong foundation essential to good citizenship and a lifetime of learning.

### **We believe...**

1. A safe environment contributes to a supportive learning experience where all students can reach their full potential.
2. Technology continues to be an integral part of our relevant and challenging curriculum.
3. A positive school climate creates a sense of belonging for our diverse population.
4. All students are unique and deserve authentic and developmentally appropriate activities that enhance learning at all levels.
5. As Woodland Middle School stakeholders – faculty, staff, students, parents, and the community share the responsibility for Woodland’s mission.

### **Student Population**

Woodland’s feeder schools for 6<sup>th</sup> grade are Crockett and Kenrose Elementary. New students transfer in throughout the school year from all across the United States as well as out of the country. We average 75 to 100 new students per year. Students move from WMS to Ravenwood High School.

### **School Colors**

Red and Black

### **School Mascot**

Warriors

### **School Hours**

7:35 AM -2:40 PM (All students must be seated in homeroom by 7:40.)

### **Accreditation**

Woodland Middle School is accredited by the Southern Association of Colleges and Schools.

### **Parent Support Organization**

Woodland has an active PTO that supports all aspects of student life. Many parents volunteer throughout the year to help make Woodland a strong learning center. Please go to [www.wcs.edu/wms](http://www.wcs.edu/wms) and click on PTO link to volunteer and for more information.

### **Parent Library**

A Parenting Library with books pertinent to helping parents and adolescents through the teen years is housed in the library media center.

### **School Partnerships**

We partner with Publix.

### **Student Recognition**

Each nine-week grading period, the WMS Principal’s List is published in the local newspaper listing all students with an 90.5 average or higher for all subjects. This list is always based on a nine-week grading period and not the semester average or year-end average. The 6<sup>th</sup>, 7<sup>th</sup> and 8<sup>th</sup> Grade Academic Awards and Recognition Ceremonies are held during the last week of school. At this time many of our students are honored for good citizenship. Students who maintain an overall 90.5 or higher average for all classes will be recognized. Those students who are the top 10 percent of their class with the highest averages will receive special recognition. Students receiving special awards during the year are recognized at this time.

### **Grading Scale**

**100 – 91 .....A**  
**90 – 81 .....B**  
**80 – 72 .....C**  
**71 – 70 .....D**  
**69 - Below... F**

Promotion to the next grade according to Board Policy requires a year-end average of 70 or higher in all academic classes.

### Assignment to Teams and Classes

Students are randomly placed on teams within a grade. Each year, as the students move to the next grade, the team placement is once again a random placement. A student does not stay with the same arrangement of students for the three years at WMS. Class placement is based on previous grades, standardized tests, special needs, and teacher recommendation. Parents and student have an opportunity to provide additional input; however, the final authority for placement lies with school officials.

### Teams & Times

Homeroom is 15 minutes, and second period is the same group with no class change between Homeroom and 2<sup>nd</sup> period. When you do change between classes, you have **5 minutes**. During homeroom, attendance is taken; and **you are tardy if you are not in your seat by 7:40**. Late bus riders have an excused tardy. Channel One News is broadcast during homeroom and morning announcements are made during homeroom. Parents may sign up to receive morning announcements via e-mail by going to [www.wcs.edu/wms](http://www.wcs.edu/wms) and clicking on the [SIGN UP](#) link.

You will have the following academic classes during the school day: Math, Science, Language Arts/Reading, and Social Studies.

The remaining two periods are referred to as Enrichment and Focus. Students have a choice to take Band and Focus, Band and Enrichment Rotation (Spanish-Art-Music-Drama-Computer, PE) or Enrichment Rotation and Focus. In the 6<sup>th</sup> grade, the last two periods of the day are reserved for the Enrichment/Focus/Band.

### Bell Schedule

**Homeroom:** 7:40 – 7:55  
**2<sup>nd</sup> Period:** 7:55 – 8: 45  
**3<sup>rd</sup> Period:** 8:50 – 9:40  
**4<sup>th</sup> Period:** 9:45 – 11:00  
**5<sup>th</sup> Period:** **Lunch**  
**6<sup>th</sup> Period:** 11:05 – 11:55  
**7<sup>th</sup> Period:** 12:00 – 12:50  
**8<sup>th</sup> Period:** 12:55 – 1:45  
**9<sup>th</sup> Period:** 1:50 – 2:40

### Attendance

**You are expected to be in class all day, every day that school is in session. However, if you are out or have an early dismissal or arrive late, you are responsible to contact your teacher to find out what you missed and/or to turn in the work you were not present to turn in with your classmates. It is not your teacher's responsibility to ask for your work or seek you out to remind you to get your assignment. Students are encouraged to use the website [www.wcs.edu/wms](http://www.wcs.edu/wms) to check missed assignments. All missed class work or tests from excused absences may be made up, provided the student makes the request immediately upon returning to school. For excused absences, make-up work should be completed as soon as possible. Any student whose absence is unexcused will not be allowed to make up the work for a grade or credit.**

***Homework is posted daily on teachers' SharePoint pages. Parents and students are expected to check the site if absent! This is an excellent tool for parents to monitor nightly homework assignments!***  
[www.wcs.edu/wms](http://www.wcs.edu/wms)



## **Curriculum**

For detailed curriculum standards, refer to the following websites:

County Standards: [www.wcs.edu/wcscurric](http://www.wcs.edu/wcscurric)

State Standards:

<http://state.tn.us/education/ci/curriculum.shtml>

**Sixth Grade:** Academic subjects for all students are Math, Science, Language Arts, Reading, and Social Studies.

Students choose two from the following three: Focus, Band and Enrichment Cycle.

**Seventh Grade:** Academic subjects for all students are Math, Science, Language Arts/Reading and Social Studies.

Students choose two from the following three: Focus, Band, and Enrichment Cycle.

**Eighth Grade:** Academic subjects for all students are Math, Science, Language Arts/ Reading, and Social Studies.

Students choose two from the following four choices: Performing Choir, Band, Focus, and the choice of four Enrichments to be taken each nine-week grading cycle. If you choose the Enrichment, you may choose some of the choices twice and have it for the equivalent of a full semester such as: PE I in the fall and then PE II in the spring.

**High School Credit Classes:** The following are available for high school credit: Algebra I, Geometry, Spanish I and Physical Science. In order to take high school credit you must have an A average in the subject area, teacher recommendation and very high TCAP/IAI scores. High school credit is not offered until 7<sup>th</sup> grade for Algebra I and 8<sup>th</sup> grade for the remaining choices of Algebra I, Geometry, Physical Science and Spanish I.

**Focus:** A study hall period in which the first 15 minutes is SSR (Silent Sustained Reading) and the remaining time allows the student to “focus” on homework and allows time to meet with teachers for assistance. If the student has been absent, this is also a time to do make-up work/test/quizzes. The library is available for Reading Counts tests and research during this time.

**Enrichment Classes:** Art, Computer, Drama, Music and Physical Education/Wellness.

- In **6<sup>th</sup> grade and 7<sup>th</sup> grade** a cycle of all the enrichment classes are taken to expose students to possibilities in all the areas.
- In **8<sup>th</sup> grade** students choose four and may do two sections of some of the classes such as: PE I and PE II.

**Band:** WMS offers an extensive Instrumental Music program including a band at every grade level, as well as a jazz ensemble.

The 6<sup>th</sup> grade band is a beginning level class with emphasis on proper playing technique and music reading. The band performs at both the winter and spring concerts.

The 7<sup>th</sup> grade band is an intermediate level class. This class also emphasizes proper playing technique and music reading as well as scales and grade Level Two musical literature. This ensemble performs at sporting events and pep rallies and participates in one judged festival/competition. The seventh grade band is also featured in the winter and spring concerts.

The 8<sup>th</sup> grade band is an advanced level class in which the students continue to develop their playing skill. Technique, music reading, and music theory are the focus as this group explores grade Level Three music. This ensemble also performs at sporting events and pep rallies, as well as two judged festivals/competitions (usually one overnight trip). The eighth grade band is featured in the winter and spring concerts.

The Jazz Band is an extracurricular ensemble offered at WMS. This group participates in a summer Jazz band camp held at WMS. This group performs at pep rallies, open house functions, local malls, schools and other community functions and is featured in the winter and spring concerts.



## WMS SERVICES

### Food Services

**Breakfast:** Breakfast items are served as an option from 7:00 – 7:25 AM to students who arrive early enough to eat. All students must be finished and in their homeroom by 7:40 AM.

**Lunches:** Students are served lunch with their academic team. Students pay daily or have a personal lunch account. Money can be deposited weekly or monthly and the student can use the account to purchase as they wish or the parent can request purchase guidelines. We encourage students to use the personal account because this speeds up the lines and lessens the amount of cash students need to have at school. NO CHARGING is allowed. Students will have a 4-digit number they must give the cashier to access their lunch account. Students are not to give out their number to anyone. Forms are available for free or reduced lunches. These forms are given to all students the first day of school when all other forms are sent home. The returned forms are submitted to the cafeteria manager, and you will be notified when your request is approved.

**Students have 25 minutes for lunch.** We want this time to be pleasant. Certain expectations help to make it nice for all students, faculty and staff using our cafeteria services. The following expectations make the cafeteria pleasant:

1. Come in orderly and sit at your assigned tables for your class/team.
2. Wait in line and enter the serving area when parent volunteer clears you to do so.
3. Remain in your seat during lunch.
4. Get permission to leave the lunchroom before time for your regular dismissal.
5. Finish all food before leaving the lunchroom.
6. All trash is put in the garbage cans.
7. Each person cleans all paper and trash from his/her eating area before leaving the area.
8. Throwing of anything is not allowed and if done will result in automatic Saturday School.
9. Screaming, loud laughter and drumming on tables is not acceptable.
10. All students are expected to use good table manners and be courteous to each other. Seats may not be saved and designated for only a choice few students.
11. Stand in line at dismissal and wait for your classroom teacher to come give your class permission to return to the classroom.

### Clinic Services

The clinic is located in the office. The School Nurse and/or Clinic Assistant will take care of any problems or injuries during the school day. They also assist students needing daily medical assistance. First aid will be administered as needed and parents notified of the situation. No internal or topical medication may be given unless it follows the policy listed below:

- **All medication students need to take in school must be kept in the office and dispensed by the designated school medication office worker.**
- **Any medication that a student needs that is to be given daily at school must be delivered to school by the parent and not brought by the student.**
- **School cannot dispense routine painkillers from a school supply. Read “Over-the-counter medications” below.**
- **These policies are countywide and must be strictly followed by all county schools.**

**Over-the-counter medications:** Over-the-counter medications must be brought to school in an unopened bottle with a form completed by the parent specifying the circumstances under which it is to be given, the size of the dosage and the time interval between dosages. Medication forms can be downloaded from the WMS website. **Students are not to keep medication on their person or in their locker/back packet.** **Prescription medications:** The medication must be brought to school by a parent in an original container and a standard form must be completed by a physician. The school can have no more than a one-week supply at a time. Parents must deliver the medication each week to the clinic assistant and/or nurse.

Students should stay at home if they are ill and/or running a fever. Homework is posted on the school website for students/parents to keep current with the missing assignments. After a student has been out three days, teachers may be asked to pull together all missed handouts or special papers needed to complete assignments. Parents may come to school to drop off make-up work and to get needed books from the student’s locker. **You must have the locker number and the locker combination in order to successfully enter the locker.** Students should get work to the teacher in a timely manner (up to three days may be allowed). Extended absences will be coordinated with the teacher for additional time to make up missed work. **Students must take the responsibility to check with the teacher for the best time to do make-up tests and quizzes.**

## **Library Introduction**

*Librarian/Media Specialist: Mrs. Anderson*

**Statistical Data:** We are proud to offer over 15,000 titles! The library has a wonderful collection of books and materials. We hope that you will take advantage of all the resources that your library has to offer!

### **Library Information**

**Circulation:** You may check out fiction and non-fiction titles. Reference materials and magazines must only be used in the library. Audio books may be checked out with a note from your reading teacher.

**Circulation Period: 15 days**

**Fines:** We do collect fines on overdue books. The charge is \$0.10 per day the item is overdue. We do not charge for weekends or holidays or days in which the student has been absent. The due date is stamped in the back of the book upon checkout.

**Renew:** You may renew items in order to avoid paying overdue fines.

**Lost/Damaged items:** If you lose a book, or if it is damaged while in your possession, you will be asked to pay for the book.

**Copies:** Copies are available. The first page is free, and additional copies are \$0.10 per page.

### **Rules**

**Quiet:** Please use a quiet voice when you are in the library.

**Organizer:** You must have your organizer with you, and it should be signed by the teacher. Your organizer should also have the barcode attached to the front. Barcodes can be replaced for \$1.00. No library business can be conducted without your organizer.

**Sign In:** If you are not part of a class that has come to the library, please enter through the doors nearest the office and sign in at the welcome desk before you proceed. Your organizer will be stamped here. You will be asked to sign your name on a different sheet if you need to take an RC test.

**Shelving:** Please use your organizer as a shelf marker.

**Demerits:** Chewing gum = 2 demerits; talking above a whisper = 1 demerit; not following library procedures = 1 demerit; continuing to not follow instructions = dismissal from library and 1 demerits; computer music = **minimum** of 2 demerits and dismissal from library.

### **Reading Counts**

Reading counts is a computerized testing program which poses 10 questions based upon the book that the student has read. It is very similar to AR. We have labeled the books that have RC tests according to grade level as follows

6<sup>th</sup> grade = yellow  
7<sup>th</sup> grade = blue  
8<sup>th</sup> grade = green  
All grades = red

A comprehensive list of titles can be found at the library's website.

Books are identified for a grade level based upon content, not difficulty. A student's reading teacher can decide if a student can read and take a test on a book that is designated for a different grade level. The majority of the books in our library are on the list for all grade levels. Students receive instructions from their reading teacher as to their reading goal and the due dates for these each nine grading period. The library is open throughout the day for students to come and take RC tests.

**Book Fair:** Once a year the library hosts a Scholastic book fair. This is traditionally an exciting and anticipated event for our school. Book fair week involves a variety of games and contests and exciting author visits! We also select a charity to support through book donations. In the past, we have provided new books to schools damaged by Hurricane Katrina, and we have collected books from Book 'Em.

**Athletics: Athletic Hotline: 472-4937**



**Tryouts:**

Students in all grades are allowed to tryout for the sports program. **All students participating in tryouts must have an athletic physical form on file with the athletic department prior to attending the tryout.** A new physical is required each school year. All physicals are kept on file in the Athletic Office. Tryout dates are announced on the intercom, posted in the cafeteria, and put on the website. It is the student's responsibility to hear this information and follow the directions for signing up to tryout for the sport. Sports teams offered at Woodland:

**Fall Sports (August-October)**

**Football-** Twice a day practice begins in late July. Once school begins practice is daily from 3:00- 5:00 PM. Most games are played on Thursdays.

**Girls Volleyball-** There is an "A", "B" and "C" team. The team practices daily from 3:00-5:00 PM. Two matches are held each week and they begin at 3:45 PM. A & B try outs are held in May with a C try out in the fall.

**Cross Country-**There is a boys' and girls' team and the season begins the second week of school. The meets are held on Thursdays at 4:00 PM and the team practices daily from 3:00- 3:50 PM.

**Golf-**There is a boys' and girls' team. Tryouts are in early August and matches are scheduled once or twice a week. The team practices and plays at Spencer Creek in Franklin. You must have golf clubs and knowledge of the game. **This is NOT for beginners nor is it a teaching situation.**

**Late Fall Sports (October-December)**

**Soccer-**There is a boys' and girls' "A" and "B" team. Tryouts begin the second week in October and the season lasts until the first week of December. Practice daily from 3:00 – 5:00 PM. Girls play most of their games on Mondays/Wednesdays; boys' games are on Tuesdays/Thursdays.

**Wrestling-**Practices begin the second week in October. The season lasts until the second week in December. Practice is daily from 3:00 -5:00 PM with most matches on Tuesdays and Thursdays at 4:00 PM.

**Winter Sports (November-February)**

**Basketball-**There is a boys' and girls' "A", "B" and "C" team selected. Tryouts begin the last week of October and practice times rotate weekly for the "A" and "B" teams between 3:00-6:00 PM "C" team practices from 6:30-8:00 PM 2-3 days per week. Usually two games are played per week and the girls' team plays first at 4:00 PM Season ends the third week in February.

**Spring Sports (February-May)**

**Baseball-**Baseball-Pitcher/catcher "sessions" and general tryouts for all position players begin at the conclusion of basketball. Varsity and junior varsity teams are selected. Practice is daily from 3:00-5:00 PM on Warrior Field which is just behind the school. Most games are played on Tuesdays and Thursdays with a starting time of 4:00 PM.

**Softball-**Tryouts begin the first week of March and an "A" and "B" team is selected. Practice is daily from 3:00-4:30 PM and most games are on Tuesdays, Wednesdays and Thursdays at 4:00 PM.

**Track and Field-**There is a boys' and girls' team and practices begins the first week in March. Most practices are at Ravenwood track daily from 4:00-5:30 PM.

**Tennis-**The boys' and girls' team begin tryouts the last week of February at the Crockett Park courts. Practice is daily from 3-4:30 PM. Matches begin at 3:30 PM.

**Lacrosse Club-**Boys' and Girls' team and practice begins in late February from 3:00 – 5:00 PM daily.

**Cheerleaders, Mat Girls & Dance Team-**Tryouts are held in the spring for the following year.

**Rules:**

- Passing grades must be maintained, and no one with a failing average is allowed to try out and/or make the team.
- Students are not allowed in the school building while waiting for an athletic practice unless under the supervision of the coach.
- It is the parent's responsibility to pick up his/her child promptly after practice/game has ended. **There is no bus transportation provided for athletics.**

## **BEST PRACTICES FOR SUCCESS:**

### **Dress Code**

- We ask that a standard of neatness be maintained for all clothing.
- Hair and Make-up: Hair must be clean and well-groomed, but hair brushes and make-up are to be kept out of sight and used in restrooms only. Bizarre extremes in hair coloring and make-up are not allowed.
- Slogans: Clothing or accessories that advertise or are suggestive of drugs, alcohol, sex, violence or obscenities are not allowed.
- Hats, caps, sunglasses, bandannas, head scarves, watch or wallet chains are not allowed.
- Shirts: Fishnet shirts or any shirts exposing undergarments or midriff are not acceptable. Sleeveless shirts are not allowed as the only shirt worn. Traditional button-down shirts are to have no more than two top buttons unbuttoned and any other shirt/blouse need to cover the same proportional area.
- Pants and Skirts: Shorts, skirts and dresses must extend below the fingertips when arms are relaxed and fully extended at sides. Spandex bicycle pants, pajama-style pants, tight sweat pants, leggings and other form-fitting pants are not allowed. No clothing should have holes above the knee. The waists of pants must be no lower than the hip bones-no sagging. Boxer shorts are considered underwear and should not be visible at any time. Pajamas and house slippers are not permitted in school.
- Since our school is air-conditioned, dressing in layers may provide comfort in case a room is either very cool or unusually warm. Dress should be for comfort rather than distraction.

### **Manners**

Students are expected to uphold their own good name and the good name of the school at all times. The students must show respect and courtesy to fellow students, teachers, administrators, cafeteria workers, secretaries, custodians, bus drivers and visitors.

#### **The following are specific expectations of good manners:**

- Students are to be in school and in all classes on time. Students who arrive late in the mornings sign in at the office. Three unexcused tardies to school per grading period will result in Demerit Hall.
- Inappropriate language will not be used and this includes gestures, inappropriate drawings, magazines or written expression.

- Follow teacher directions without argumentation or stalling. While it is ok to ask for clarification, it is not okay to ignore a teacher's request. This includes doing the assigned homework.
- Leave all toys and other distracting electronic items at home. If they go off or are out in class, items will be confiscated by the teacher.
- Bullying includes any mean look, word, sign or act that hurts another person's feeling or physical body. This is the ultimate in the lack of manners and is not tolerated.
- Students will always do their own work and use their own answers on tests.
- Backpacks and lockers are to be kept neat and back packs are to be in the locker until the last period of the day.
- Students are courteous and respectful to others at all times. This includes teachers, staff and fellow peers.
- Students follow all the rules in the cafeteria and make sure proper table manners are used when eating your lunch. Students do not save seats and make a point of excluding others when taking seats for lunch.
- Students always pick up after themselves and do not leave trash or belongings for others to have to clean.

### **Attendance**

Excused absences are given for personal illness or illness in immediate family as well as for death in the family and religious holiday. Absences for other reasons than these stated reasons may be excused at the discretion of the principal. You must bring a note to the principal for the principal's signature and approval.

If you are absent, parents are to call the office in the morning to tell the attendance secretary the student will be absent for the day. If you do not call, the school office will call home sometime during the day to verify the absence. Upon returning, you are to bring a note to the office that should include the number of days you are absent and the reason you are absent with the parent signature. You will be issued an admittance slip and you are to show the slip to all your teachers during the day and at the end of the day you return it to the office. Students are not allowed to make-up work missed when an absence is unexcused. If you accumulate five unexcused absences, a Truancy Petition is to be filed with juvenile services. Parents must come in to sign students in and out of school.

## Activities

**Chorus** – consists of approximately 100-130 students meeting in the mornings before school, usually two to three times per week. Performances are in October, November, March, April and May. There are competitions, festivals, and many additional performances for this group.

**Performance choir is available to 8<sup>th</sup> graders as a year long class.**

**Destination Imagination** - You've heard of spelling bees, quiz bowls, and science fairs. Well, Destination ImagiNation is none of those things – and all of those things! DI is a fun learning environment where our students take what they know and what they are good at and apply it to solve challenges. The Team Challenge is solved over a period of twelve weeks or more. They learn to work cooperatively with a team to pushing the limits of imagination and best not only their competition, but themselves. DI builds their creativity, problem solving, critical thinking, their particular talents and teamwork in enjoyable and meaningful ways to solve the Team Challenge.

**Math Team**- Six contests throughout year with one held during school hours. Practice is once a week.

## Clubs & Organizations

**Art Club** – meets the 1<sup>st</sup> Tuesday of each month. Activities include working with a variety of media, exploring visual communication, and developing awareness and an appreciation of art.

**Beta Club** – by invitation to students and based on grades, character, and leadership.

**Chess Club** - The Chess Club is open to any middle school student who is interested in exploring and developing his/her chess skills.

**Drama** - Woodland offers many dramatic opportunities through its forensics program, as well as through the musical that is offered every spring. Auditions for the musical are open to all grades and the cast ranges from 30-50 students.

**Forensics** - What do Oprah Winfrey, Rene' Zellweger, and the CEO of CNN all have in common? They all participated in forensics. Forensics is competitive speech, debate, and drama. Woodland Middle fields a large and successful program that has produced multiple national level champions. It is open to all grades and all ability

levels, and is flexible enough to work around most schedules.

**FCA** - Christian club that meets once a week before school. Students gather to discuss issues of interest and all have an opportunity to share their faith in a fun, relaxed and student conducted environment. Although the name implies, FCA is not only for athletes. ALL students are welcome to attend

**Remote Control Car Club** - Tired of spinning your wheels? Do you have the need for speed? Well we have an opportunity for you. Gentleman, start your engines! This is an organization created to explore the world of remote controlled vehicles. We meet about twice a month, race our cars, and swap car stories.

**Science Club** – meets once a month to do fun and enriching science activities/experiments. Special trips and guest speakers from the scientific community are planned.

**School Newspaper – *The Arrow***, meets weekly (sometimes bi-monthly) and publishes once per quarter. Weekly staff meetings authenticate the writer's workshop environment as students pre-write collaboratively, draft, revise and edit before submitting articles for layout. Special attention is given to perfecting journalistic techniques such as clarity and brevity, while creative expression is encouraged. Students from each grade level are invited to participate.

**STARS** – Students taking a Right Stand to make positive, healthy life choices. Leadership activities available as well as weekly group meetings during the school day.

**Student Council** – homeroom representatives meet monthly after school. Many service projects are conducted as well as school dances and social events.

**Warrior Readers Book Club** – meets once a month in the library. We read the books nominated for the Volunteer State Book Award, and we vote for our favorite book and send our vote to the committee who selects the winner of this award. The book club meets during lunch. Please see Mrs. Anderson in the library if you would like to join.

## Events

**Model U.N.** - sponsored by the YMCA and is held in the fall. All grade levels are eligible. Students work in groups of three and research problems that a country might be facing and prepare proposals to

present to a “Model” U.N. Most all of the middle schools in Williamson County participate. The meeting is held at the Embassy Suites in Franklin. It is a wonderful, enriching experience that offers the opportunity to research, analyze information, write, prepare and deliver a speech. It also provides an opportunity to begin to understand the complex nature of culture, discuss economic connections, and understand different systems of governance.  
Sponsors:

**Youth Legislature** – This is sponsored by YMCA and is held in the spring. The students actually go to the Capitol and present in the Senate and House chambers. It is an awesome experience! They work in groups of three and research and prepare a “bill”. They are actively engaged in seeing their “idea” travel through many channels on the road to becoming a “law”. They will experience how “politics” works. Both Model U.N. and Youth Legislature tie in with the development of character traits such as honesty, caring, respect, and responsibility. Youth Legislature is open to all grade levels.

**Geography Bee** – This is sponsored by the National Geographic Society. It is a valuable activity that encourages the teaching and learning of geography. Geography has an important role in business, in travel, and in public relations. The Bee is a way to help nurture, encourage, and reward students’ interest in geography. Students sign up for the Bee in November and the Preliminary Round is held on campus in the library in January. All grade levels may participate. The State Bee is held in April. We have a rich tradition of advancing to the state level. The national championship is held in Washington, D.C. in May of each year. It is a very rewarding experience.

**Talent Show** – tryouts with two performances during the school day and one evening performance.

### Student Support Services

#### School Counseling

The school counseling program is an integral part of the educational process at WMS. There are two full-time counselors. Assignments for the 2008-09 year are:

**Kim Ezell** – 8<sup>th</sup> grade, 6<sup>th</sup> Shawnee

**Michele Fuller** – 7<sup>th</sup> grade, 6<sup>th</sup> Cherokee

Programs and activities are provided to develop personal, social, vocational and academic growth. Through individual and group counseling, all

students are provided help to become better learners and have a satisfying school life. The counseling department provides services for all students and consultation to parents, teachers, administration and the community.

### Special Education Services

Special education students participate in the Inclusion Model. Special education teachers and assistants support the students within the regular general education curriculum. We adhere to the least restrictive environment philosophy in meeting the students’ needs.

Gifted education is provided by a full-time gifted consultant who meets with the students as determined by the I.E.P. The consultant also meets and stays in contact with the student’s team of teachers to provide classroom assistance as needed to the team of teachers.

A speech therapist, physical therapist, hearing therapist, and occupational therapist are available to any of our students requiring these services.

### S.T.A.R.S

Stars stands for **Student Taking a Right Stand** against drugs, alcohol and violence. However here in the middle school it generalizes to helping students make positive life choices as they enter adolescence. Teachers in our building receive training and make up the Core Team to work with the Stars counselor in small groups. Some of the groups include:

**Concerned Persons Group** for those students who are concerned about someone they know not making good life choices. This can be a friend or family member.

**Divorce Group** is for those students having to deal with this issue or who wish to share their thoughts and feelings with others who are going through the same family separation.

**Grief Group** is for those students who have lost someone and wish to meet and talk with others dealing with the same loss experience.

**Anger Management Group** is for those students who feel they wish to receive help channeling their anger into a more constructive vein.

**New Persons Group** is for those students new to the school. The issues that arise due to being new such as making friends, school policy, etc are covered in this group.

Students are given an opportunity in the fall to check if they wish to see about getting into one or more of these groups. Parents can request their child be contacted by the Stars counselor or teachers can refer

students to be asked to participate in one of the groups.

A student executive council made up of students is part of the STARS program. These students apply and are interviewed and selected to serve for the school year. These students are provided leadership training in the fall of the school year. The students then provide leadership and give input for the school-wide activities. All students are given a chance to join STARS in the fall. There is a kick-off rally and then students sign a pledge card to make good choices for themselves.

### ***Looking Ahead...***

Some students have the opportunity to take high school courses in middle school. To have this honor, you must have a teacher's recommendation, an A average and very high TCAP/IAI/apptitude test results in the academic area of the high school course. Students who are successful with these courses receive high school credit by passing the course and the exam required by the course. The grade is recorded as Credit or No Credit with **NO cumulative grade point average (GPA) value on the high school transcript** (The high school

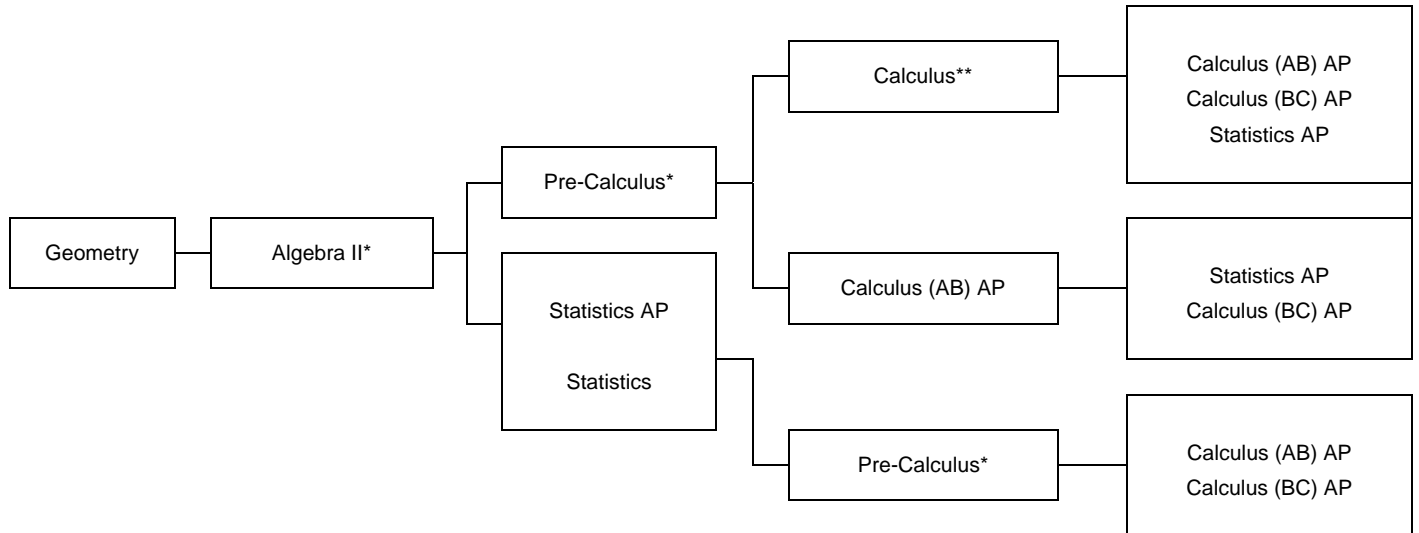
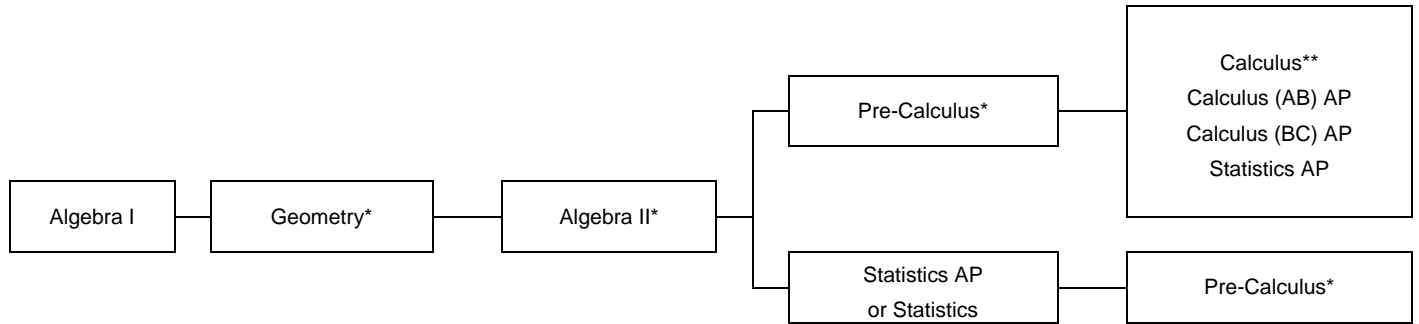
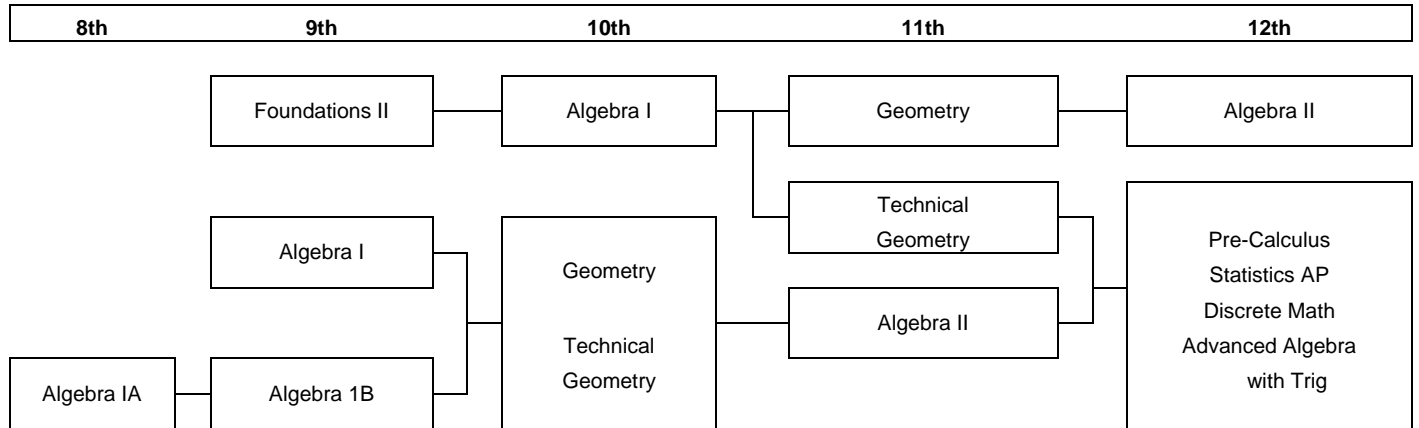
transcript is a historical document of all courses taken in high school). Students who take a high school course and marginally pass the course, but still pass and earn credit, may not take the course over again. The first grade earns credit and stands but the student can take the course over as an audit for no high school credit. WMS offers Algebra I, Geometry, Physical Science and Spanish I for high school credit.

Listed below are the ***PROPOSED*** high school graduation requirements beginning with the **CLASS OF 2013**, followed by possible high school sequences for math and science courses. **The state of TN has recently adopted the American Diploma Project and the goal is for state-wide implementation beginning with the class of 2013. For more information go to: <http://www.state.tn.us/sbe>**



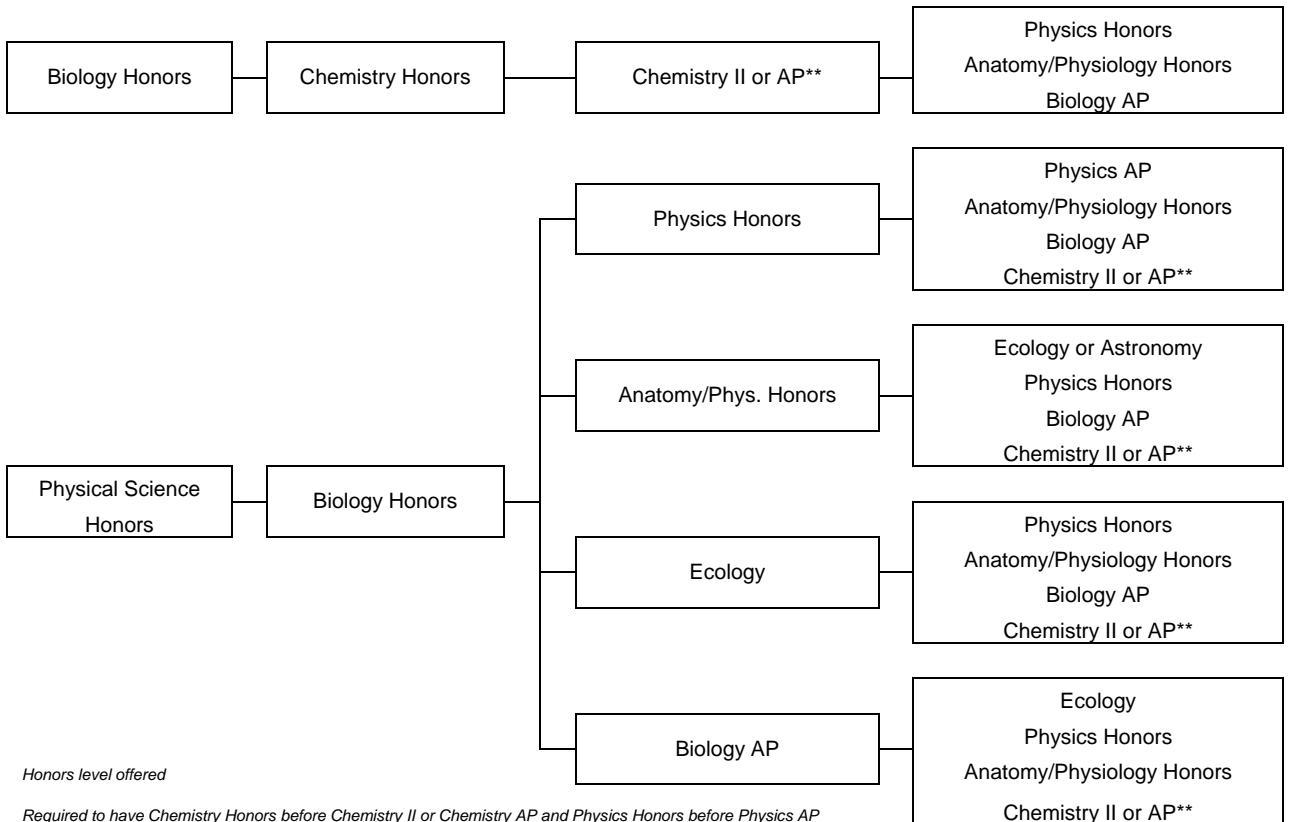
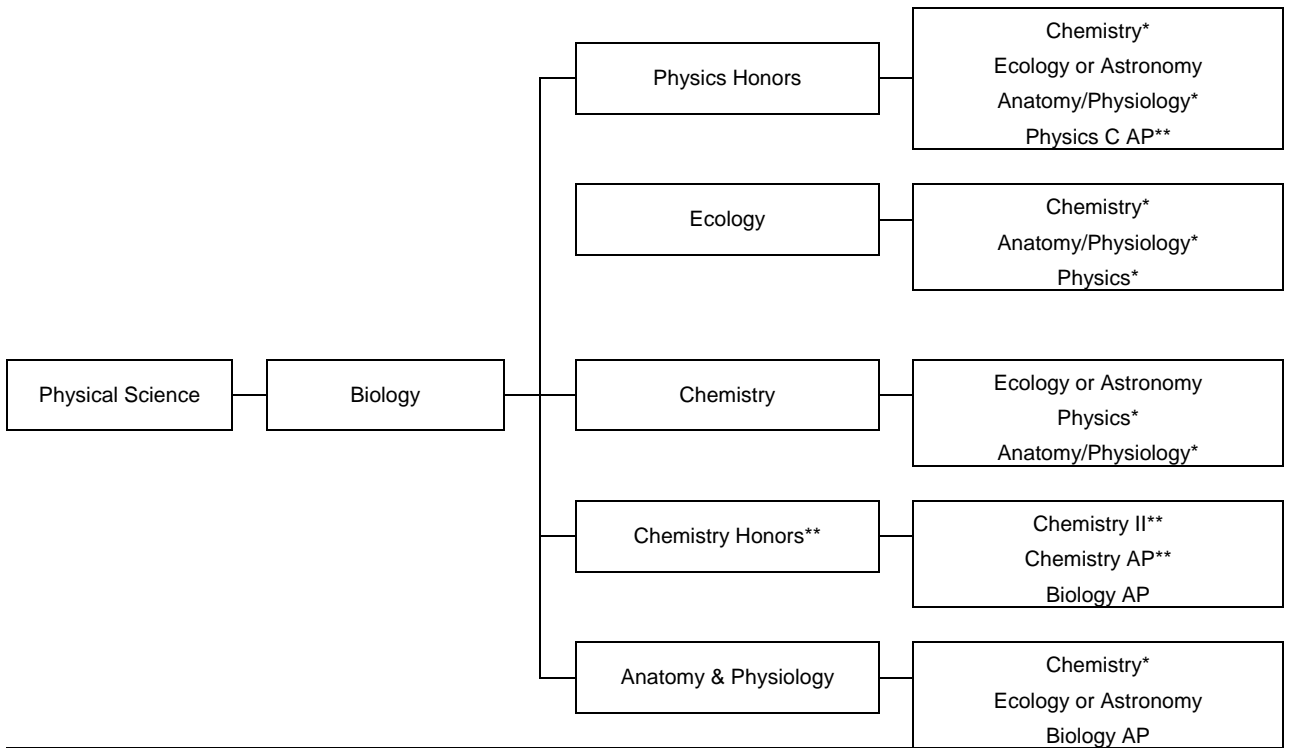
	<b>University Path</b>	<b>Technical Path</b>	<b>Dual Path</b>
English	4 Credits	4 Credits	4 Credits
Math	4 Credits	4 Credits	4 Credits
Science	3 Credits	3 Credits	3 Credits
Social Studies	4 Credits	4 Credits	4 Credits
Lifetime Wellness	1.5 Credits	1.5 Credits	1.5 Credits
Personal Finance	.5 Credit	.5 Credit	.5 Credit
Foreign Language	2 Credits	0 Credit	2 Credits
Fine Arts	1 Credit	0 Credit	1 Credit
Electives	4 Credits	3 Credits	0 Credit
Tech Prep	0 Credit	4 Credits	4 Credits

# MATH SEQUENCE



\* Honors level offered  
 \*\* Honors only offered

<b>SCIENCE SEQUENCE</b>			
<b>9th</b>	<b>10<sup>th</sup></b>	<b>11th</b>	<b>12th</b>



\* Honors level offered

\*\* Required to have Chemistry Honors before Chemistry II or Chemistry AP and Physics Honors before Physics AP

## FOUR YEAR COURSE PLAN/WORKSHEET

This page represents the current high school graduation requirements.

**\*\*\*New graduation requirements have been proposed and subject to change beginning with the Class of 2013! \*\*\***

University Preparatory Curriculum		Dual Preparatory Curriculum		Technical Preparatory Curriculum	
Course	# of Credits	Course	# of Credits	Course	# of Credits
<b>English</b>	<b>4</b>	<b>English</b>	<b>4</b>	<b>English</b>	<b>4</b>
<b>Math</b> (Must include Algebra I, Geometry, and Algebra II)	<b>3</b>	<b>Math</b> (Must include Algebra I, Geometry, and Algebra II)	<b>3</b>	<b>Math</b> (Must include Algebra I)	<b>3</b>
<b>Science</b> (Must include one unit of Biology, Chemistry, or Physics)	<b>3</b>	<b>Science</b> (Must include one unit of Biology, Chemistry, or Physics)	<b>3</b>	<b>Science</b> (Must include one unit of Life and one unit of physical)	<b>3</b>
<b>Social Studies</b>		<b>Social Studies</b>		<b>Social Studies</b>	
World Geography	1	World Geography	1	World Geography	1
World History	1	World History	1	World History	1
U.S. History	1	U.S. History	1	U.S. History	1
Economics	.5	Economics	.5	Economics	.5
Government	.5	Government	.5	Government	.5
<b>Lifetime Wellness</b>	<b>1</b>	<b>Lifetime Wellness</b>	<b>1</b>	<b>Lifetime Wellness</b>	<b>1</b>
<b>Foreign Language</b>	<b>2</b>	<b>Foreign Language</b>	<b>2</b>	<b>Tech Prep Sequence</b>	<b>4</b>
<b>Fine Arts</b>	<b>1</b>	<b>Fine Arts</b>	<b>1</b>	<b>Electives</b>	<b>3</b>
<b>Electives</b>	<b>4</b>	<b>Tech Prep Cluster</b>	<b>4</b>		
<b>TOTAL</b>	<b>22</b>	<b>TOTAL</b>	<b>22</b>	<b>TOTAL</b>	<b>22</b>

9 <sup>TH</sup> GRADE	CREDITS
English I	
Math	
Science	
World Geography	
Lifetime Wellness	
Elective/Tech Prep Cluster	
Study Hall	
<b>TOTAL</b>	

10 <sup>TH</sup> GRADE	CREDITS
English II	
Math	
Science	
World History	
Elective	
Elective/Tech Prep Cluster	
Study Hall	
<b>TOTAL</b>	

11 <sup>TH</sup> GRADE	CREDITS
English III	
Math	
Science	
US History	
Elective	
Elective/Tech Prep Cluster	
Study Hall	
<b>TOTAL</b>	

12 <sup>TH</sup> GRADE	CREDITS
English IV	
Government/Economics	
Math/Elective	
Science/Elective	
Elective	
Elective/Tech Prep Cluster	
Study Hall	
<b>TOTAL</b>	

## School Calendar 2008 – 2009

Adopted 11-19-2007 to Williamson County Board of Education

Day	Date	Definition
Wednesday-Thursday	July 30-31	New Teacher Orientation
Friday	August 1	Administrative Day (All Teachers)
Monday <b>(No Students)</b>	August 4	Site-Based Staff Development (All Teachers)
Tuesday <b>(No Students)</b>	August 5	Middle/High School Site Based Staff Development Elementary District Staff Development
Wednesday <b>(No Students)</b>	August 6	Elementary Site Based Staff Development Middle/High School District Staff Development
Thursday <b>(No Students)</b>	August 7	Administrative Day (Teachers Work in Classrooms)
Friday <b>(No Students)</b>	August 8	Administrative Day (All Elementary Teachers Testing [MS, HS teachers do not report])
Monday <b>(Students ½ day)</b>	August 11	First ½ day for students
Tuesday	August 12	First Full Day for Students
Monday <b>(No School)</b>	September 1	Labor Day <b>(System Closed)</b>
Tuesday and Thursday	September 23 & 25	Parent Teacher Conferences after the school day serves as one administrative day
Wednesday	October 15	End of First Quarter Grading Period (47 days)
Thursday-Friday <b>(No School)</b>	October 16-17	Fall Break <b>(October 17 System Closed)</b>
Tuesday--State/National Election Day <b>(No Students)</b>	November 4	Middle/High School Site Based Staff Development Elementary District Staff Development
Monday – Friday <b>(No School)</b>	November 24-28	Thanksgiving Holiday <b>(System Closed 27-28)</b>
Tuesday-Friday	December 16-19	First Semester Exams
Friday <b>(Students ½ Day)</b>	December 19	End of First Semester (86 instructional days)
Monday, December 22- Monday, January 5 <b>(No School)</b>	December 22 - January 2	Winter Holiday-- <b>(System Closed Dec 24-26 and (No School) Dec 31-Jan 2)</b>
Monday <b>(No School)</b>	January 5	Administrative Day (MS / HS Teachers only)
Tuesday	January 6	First Student Day Second Semester
Monday <b>(No School)</b>	January 19	Martin Luther King, Jr. Day <b>(System Closed)</b>
Monday <b>(No Students)</b>	February 16	Elementary Site Based Staff Development Middle/High School District Staff Development
Friday	March 13	End of Third Quarter Grading Period (47 days)
Saturday <b>(Information only)</b>	April 4	ACT Testing for all 11 <sup>th</sup> grade students
Monday – Friday <b>(No School)</b>	April 6-10	Spring Break <b>(System Closed April 9-10)</b>
	March 30- Apr 24	TCAP Testing Window
Monday-Thursday	May 18-21	Semester Exams
Thursday <b>(Students ½ Day)</b>	May 21	Last Day for Students – End of Second Semester (91 instructional days)
Friday	May 22	Administrative Day
Thursday – Sunday	May 21 – 24	Graduation Window